

Thermo Pride®

Oil Heating
Low Profile
Highboy Furnaces
OH6, OD6, OH8 Series

Built Tough for Lifetime Comfort™



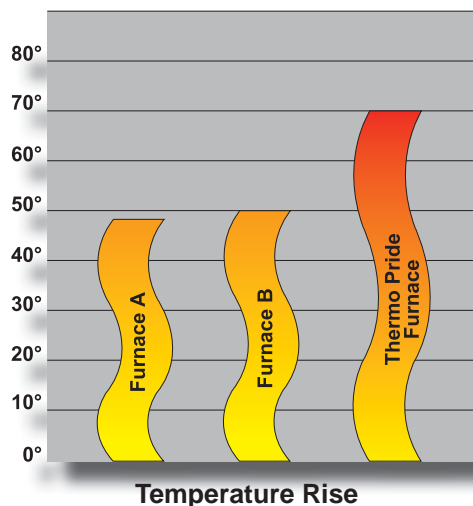
Oil Heating At Its Best

Thermo Pride® — Dependable Craftsmanship

For over 60 years, we at Thermo Pride have listened to your concerns about home comfort and have responded by building the best, most reliable, and efficient furnaces and cooling systems. When you want to experience exceptional comfort, increased efficiency, and handcrafted quality along with the proven warranty of Thermo Pride, but have limited space, select the low profile OH6, OD6, or OH8 oil furnaces. You'll be sure to receive quiet, reliable, long lasting performance from your home heating system with furnaces that are specifically designed to meet your home's needs.

Comfort

Comfort is the purpose behind any heating system. "Temperature rise" makes the difference between feeling warm, comfortable air from the registers in your home or the feeling of cool air blowing across you when the furnace is on. It is the difference in air temperature from the point where it enters the furnace to the point where it exits. The higher the temperature rise then the warmer the air is when it enters the rooms of your home. At Thermo Pride, we achieved a 60°–70°F temperature rise across our full line of oil furnaces. This is an air temperature up to 30°F warmer than the competition—providing a far superior comfort level.



* 70° is achieved by adjusting blower settings.

Warranty

The proven longevity of Thermo Pride's heat exchanger, combined with the Limited Lifetime Warranty,

virtually eliminates the worry of ever having

to replace your furnace. Should you sell your home, the warranty will automatically transfer to the new homeowners. Thermo Pride furnaces also come with a "Peace of Mind" 10-year parts warranty.

PEACE OF MIND
WARRANTY

Handcrafted Quality

Each Thermo Pride furnace cabinet is powder coated inside and out after it is formed for a durable, tough finish that will ensure long life and a quality appearance. The interlocking insulated furniture grade steel cabinet helps retain heat within the furnace and prevents annoying vibrations during operation. The rounded corners add structural strength and a pleasing appearance to the cabinet.



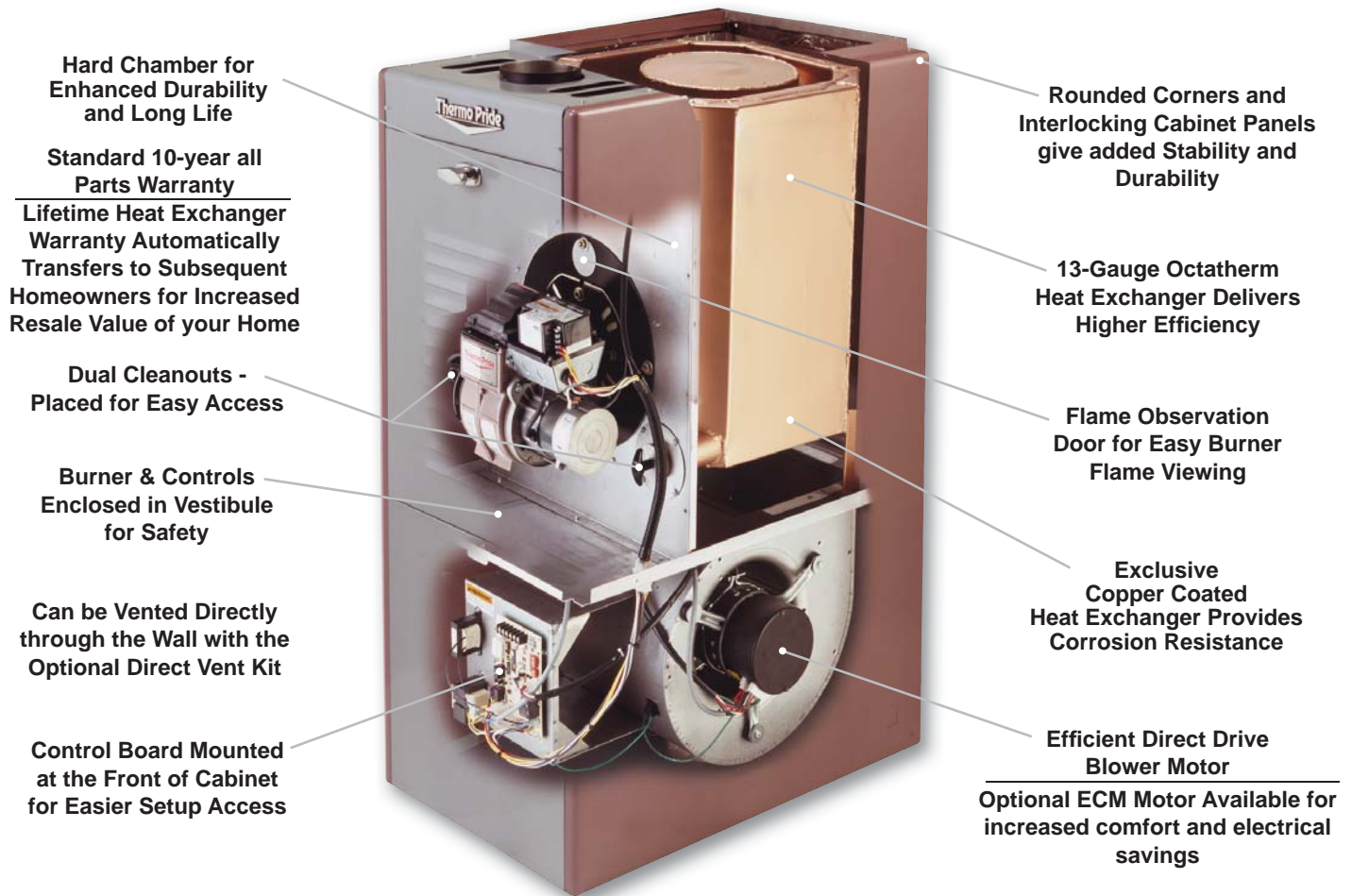
The heart of any furnace is the heat exchanger. Our heat exchangers are fabricated of 13-gauge copper coated steel in a unique octagonal shape to increase surface area and optimize heat transfer. Our exclusive copper coating helps prevent corrosion from damp external conditions. This unique combination of design and material provides Thermo Pride oil furnace owners with the confidence that these furnaces are made to last a lifetime!

We're proud that Thermo Pride furnaces are manufactured in the United States out of American steel. Thermo Pride oil products have also earned the industry-respected certification for safety from Underwriter's Laboratory (UL).



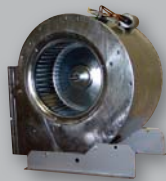


Features & Benefits



Blower Motors

Thermo Pride's direct-drive blowers allow the installer to select the appropriate heating and cooling blower speed for your home.



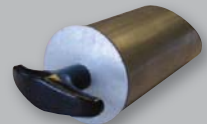
Your furnace is also available with the optional ECM motor. The ECM motor provides infinite blower speeds for increased efficiency and ramps up to speed reducing the annoying burst of cold air from your registers giving you a more comfortable home. It can pay for itself in electrical savings alone.

Ceramic Refractory

The ceramic refractory is designed to assure more complete combustion which means increased efficiency. It also provides protection for the heat exchanger from the direct flame and ensures quiet operation.

Easy Access Cleanouts

Clean outs are conveniently placed to make heat exchanger cleaning a breeze.



Filter Frame and Filter

A washable air filter means cleanliness, convenience, and cost savings over disposable air filters.

High-Efficiency Flame Retention Burner

Beckett hi-speed flame retention burners are standard on Thermo Pride furnaces. They provide more complete combustion and higher fuel efficiency. The Riello burner is also an available option.



Riello BF3



Built with Your Home in Mind

Cabinet Construction

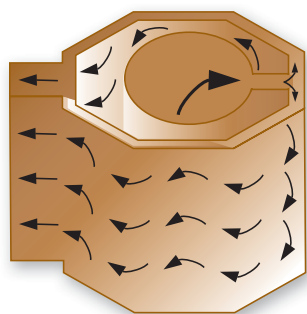
Thermo Pride cabinet panels are fabricated of 22-gauge cold-rolled steel with rounded corners and an interlocking design for a more finished appearance and greater strength. The cabinet is powder coated on both sides and is lined with molded high density foil-faced fiberglass insulation for maximum heat retention.



Thermo Pride incorporates a burner vestibule enclosure into the design of our low profile furnaces. The vestibule and insulation diminish burner combustion noise and provide safety by isolating controls from children and pets.

Octatherm™ Heat Exchanger

At the heart of every Thermo Pride oil-fired furnace is the “Octatherm” heat exchanger. The heat exchanger is fabricated out of 13-gauge copper coated steel. Some manufacturers use less expensive, thinner 14 or 16-gauge steel. Thermo Pride’s copper powder coating helps prevent corrosion from damp conditions often encountered in basement installations.



The octatherm heat exchanger’s unique eight sided design provides more efficient use of the heat transfer area. This design puts less stress on the steel and thus provides a longer life. As a result, the octatherm design generates increased dependability and a lifetime of comfort for your home.

6 reasons why the OH6 or OH8 oil furnace is perfect for your home...

1. The OH6 and OH8 are designed to fit nicely in your low ceiling basement since they are 12 to 16 inches shorter than a typical highboy furnace.



2. They are compatible with the new more efficient air conditioners (the new AC evaporator coils are much taller than older coils). This means the lower furnace height makes the installation job less cumbersome for installers and saves on your costs.
3. They feature easier servicing due to improved heat exchanger cleanout locations, which also means a savings for you.
4. The OH6 and OH8 utilize Thermo Pride’s exclusive 13- gauge copper coated Octatherm heat exchanger.
5. The OH6 and OH8 provide Annual Fuel Utilization Efficiencies (AFUE) up to 87.3%.
6. With a simple nozzle change to vary the firing rates, your contractor can customize your unit to meet the specific needs of your home.

Specifications



OH6						
MODEL NUMBER	OH6FA072D48B or OH6FA072DV4B★ Beckett Burner			OH6FA072D48R or OH6FA072DV4R★ Riello Burner		
Heating Capacity	High Fire	Med. Fire	Low Fire	High Fire	Med. Fire	Low Fire
Heat Input Rate (BTUH)	106,250	85,000	70,000	106,250	85,000	70,000
Output BTUH ¹	90,000	73,000	60,000	90,000	73,000	60,000
Seasonal Efficiency ²	83.3%	85.6% ⁵	83.3%	86.1%	86.1%	86.1%
Largest Rec A/C ³	4 Tons			4 Tons		
Nominal Temp. Rise ⁴	60°	60°	60°	60°	60°	60°
Casing Height (In.)	45"			45"		
Casing Width (In.)	20"			20"		
Casing Depth (In.)	30"			30"		
Nominal Flue Outlet	5"			5"		
Approx. Shipping Weight	250 lbs.			250 lbs.		
Supply Air Outlet Size (In.)	18" x 19"			18" x 19"		

OH8						
MODEL NUMBER	OH8FA119D60B or OH8FA119DV5B★ Beckett Burner			OH8FA119D60R or OH8FA119DV5R★ Riello Burner		
Heating Capacity	High Fire	Med. Fire	Low Fire	High Fire	Med. Fire	Low Fire
Heat Input Rate (BTUH)	156,250	140,000	119,000	156,250	140,000	119,000
Output BTUH ¹	132,000	119,000	101,000	132,000	119,000	101,000
Seasonal Efficiency ²	85.8%	85.8%	85.8%	86.0%	86.0%	86.0%
Largest Rec A/C ³	5 Tons			5 Tons		
Nominal Temp. Rise ⁴	60°	60°	60°	60°	60°	60°
Casing Height (In.)	50-1/8"			50-1/8"		
Casing Width (In.)	24-1/2"			24-1/2"		
Casing Depth (In.)	36-1/2"			36-1/2"		
Nominal Flue Outlet	7"			7"		
Approx. Shipping Weight	310 lbs.			310 lbs.		
Supply Air Outlet Size (In.)	20" x 20"			20" x 20"		

1. Output BTUH based on Annual Fuel Efficiency Rated by manufacturer.
 2. Seasonal efficiency (also called AFUE-Annual Fuel Utilization Efficiency) ratings are based on U.S. Department of Energy Test Procedures.
 3. To permit largest recommended air conditioning (at .5 static pressure), selection of the highest motor speed is required.
 4. A 70° temperature rise can be achieved by changing the blower settings.
 5. The second rating represents the AFUE rating with optional Beckett NX-2 burner
- ★ As an ENERGY STAR® Partner, Thermo Pride has determined the V4 and V5 models meet ENERGY STAR 3.0 guidelines.

2-Stage OH6 The Ultimate Oil Furnace



Dependable Craftsmanship with Maximum Comfort and Efficiency

Your home is your castle – that’s how the saying goes. So, when you’re looking for a new oil furnace look no further than the Thermo Pride 2-Stage OH6 oil furnace. This state-of-the-art furnace will provide your family with luxurious comfort and energy savings for many years to come.



**2-Stage OH6
Oil Furnace**

The 2-Stage OH6 combines the benefits of the time-tested and proven low-profile highboy OH6 oil furnace coupled with a 2-Stage Riello oil burner and an electronically commutated blower motor (ECM.) The 2-Stage burner operates at the first stage most days comfortably heating your home and saving energy. On those bitter cold days when your home needs the extra heat, the burner automatically switches to the second stage providing additional

warmth. The ECM motor gives you even more comfort by operating with infinite blower speeds that automatically adjust for varying heating and cooling modes. When heat is needed the blower smoothly ramps up to speed gently circulating the warm air around your home and eliminating that annoying blast of cold air from your registers. All you feel is comfort. The ECM motor’s infinite speeds also increase your furnace efficiency while the motor pays for itself with dramatic electrical savings in both the heating and cooling modes. This is the furnace you deserve – the 2-stage OH6. Today’s state-of-the-art technology combined with Thermo Pride’s traditional hand crafted quality.

2-Stage Burner Easy Setup

The 2-Stage burner is easy to set up and service. Your contractor merely moves a pin and adjusts it for the first stage as with a traditional burner, then moves the pin again and sets it up for the second stage. Lastly, he will move the pin to the third setting to run. The burner will then switch from first to second stage automatically as needed. The burner is also mounted on a double hinge making it easy to service as needed.

Specifications

Model Number	OH6FX072DV4R ★			
Heating Capacity	Low Capacity		High Capacity	
	Low Fire	High Fire	Low Fire	High Fire
Heat Input Rate (BTUH)	70,000	85,000	85,000	106,250
Output BTUH ¹	61,500	74,000	74,000	91,000
Seasonal Efficiency ² (AFUE)	87.0 ★		87.0 ★	
Largest Recommended A/C ³	4 Tons		4 Tons	
Nominal Temperature Rise	64°	64°	64°	64°
Dimensions (inches) H x W x D	45” x 20” x 30”			
Nominal Flue Outlet Diameter	5”			
Approximate Shipping Weight (lbs.)	250			
Quantity and Size of Permanent Filters	(1) 24-3/4” x 15-3/4”			
Electrical Requirements	120 / 60 / 1			
Maximum Fuse Size /ECM	15			
Total Current (AMPS) /ECM	12.1			
Height from Floor to Center of Flue	40-3/4”			
Supply Air Outlet Size W x D	18” x 19”			
Return Air Ductwork Connection Flange Size on Filter D x H	24-1/2” x 15”			
Return Air Inlet Opening Size in Side Casing (to be cut-out by dealer) D x H	23” x 14”			
Accessory Items				
Programmable Thermostat	350866			

1. Output based on Annual Fuel Utilization Efficiency rated by manufacturer.
2. Seasonal Efficiency (also called AFUE - Annual Fuel Utilization Efficiency) ratings are based on tests following the U.S. Department of Energy test procedures.
3. To permit largest recommended air conditioning (at .5 static pressure), selection of the highest motor speed is required.

★ As an ENERGY STAR® Partner, Thermo Pride has determined this unit meets the ENERGY STAR 3.0 guidelines.



OD6

For Horizontal and Downflow Applications

Dependable Craftsmanship with Maximum Versatility and Comfort



When you're looking for a new oil furnace look no further than the Thermo Pride OD6 downflow/horizontal oil furnace. This state-of-the-art furnace will provide your family with luxurious comfort and energy savings for many years to come.



OD6 Oil Furnace

The OD6 combines the benefits of the time-tested and proven low-profile highboy OH6 into a downflow/horizontal design perfect for those tight attic or basement crawl space applications. A Beckett burner is standard on the OD6 while a Riello burner (standard or 2-stage) and an electronically commutated blower motor (ECM) are also available options.

The 2-Stage burner operates at a standard low fire rate most days comfortably heating your home and saving energy. On those bitter cold days when your home needs the extra heat, the burner automatically switches to high fire providing additional warmth. The ECM motor gives you even more comfort by operating with infinite blower speeds that automatically adjust for varying heating and cooling modes. When heat is needed the blower smoothly ramps up to speed gently circulating the warm air around your home and eliminating that annoying blast of cold air from your registers. All you feel is comfort. The ECM motor's infinite speeds also increase your furnace efficiency while the motor pays for itself with dramatic electrical savings in both the heating and cooling modes. The OD6 combines all the features you would expect from Thermo Pride's tradition of handcrafted quality with a new versatile low-profile design.

This is the perfect furnace for your home – the OD6. Today's state-of-the-art technology combined with Thermo Pride's traditional hand crafted quality.

Specifications

Model Number	OD6FA072D48B, OD6RA072D48B, OD6FA072DV5B,★ OD6RA072DV5B ★			OD6FA072D48R, OD6RA072D48R, OD6FA072DV5R,★ OD6RA072DV5R ★			Optional 2-Stage Riello Burner			
							OD6FX072DV5R,★ OD6RX072DV5R ★			
	with Standard Beckett Burner			with Optional Riello Burner			Low Capacity		High Capacity	
Heating Capacity	Low Fire	Medium Fire	High Fire	Low Fire	Medium Fire	High Fire	Low Fire	High Fire	Low Fire	High Fire
Heat Input Rate (BTUH)	70,000	85,000	106,250	70,000	85,000	106,250	70,000	85,000	85,000	106,250
Output (BTUH) ¹	60,000	72,000	89,000	60,000	72,000	89,000	61,500	74,000	74,000	91,000
AFUE% ²	85.7	85.7	85.7	85.7	85.7	85.7	86		86	
Largest Recommended A/C (Tons) ³	D48: 4 / DV5: 5						5			
Nominal Temp. Rise	60°						64°			
Dimensions (In.) H x W x D	45 x 20 x 30						45 x 20 x 30			
Nominal Flue Outlet Diameter (In.)	5						5			
Approximate Shipping Weight (Lbs.)	250						250			
Supply Air Outlet Size (In.) WxD	18 x 20						18 x 20			
Return Air Inlet Opening Size (In.) WxD	18 x 19						18 x 19			

1. Output BTUH based on annual fuel utilization efficiency rated by manufacturer.
 2. AFUE ratings are based on tests following U.S. Department of Energy test procedures.
 3. To permit largest recommended air conditioning (at .5 static pressure), selection of the highest motor speed is required.
- ★ As an ENERGY STAR® Partner, Thermo Pride has determined the V5 models meet the ENERGY STAR 3.0 guidelines.

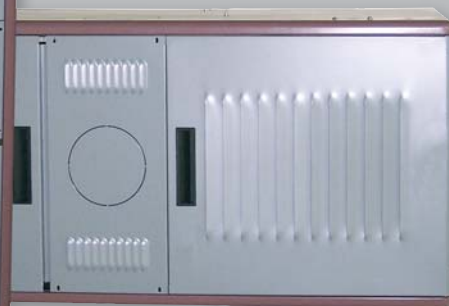




**OH6
Oil Furnace**



**OH8
Oil Furnace**



**OD6
Oil Furnace**

Built Tough for Lifetime Comfort™



Scan this code
with your smart
phone to visit our
website.
www.thermopride.com

Visit us at www.thermopride.com

PL81410021003 - 2/12
© 2012 Thermo Products, LLC